



Trailmate

www.trailmate.com

JOYRIDER

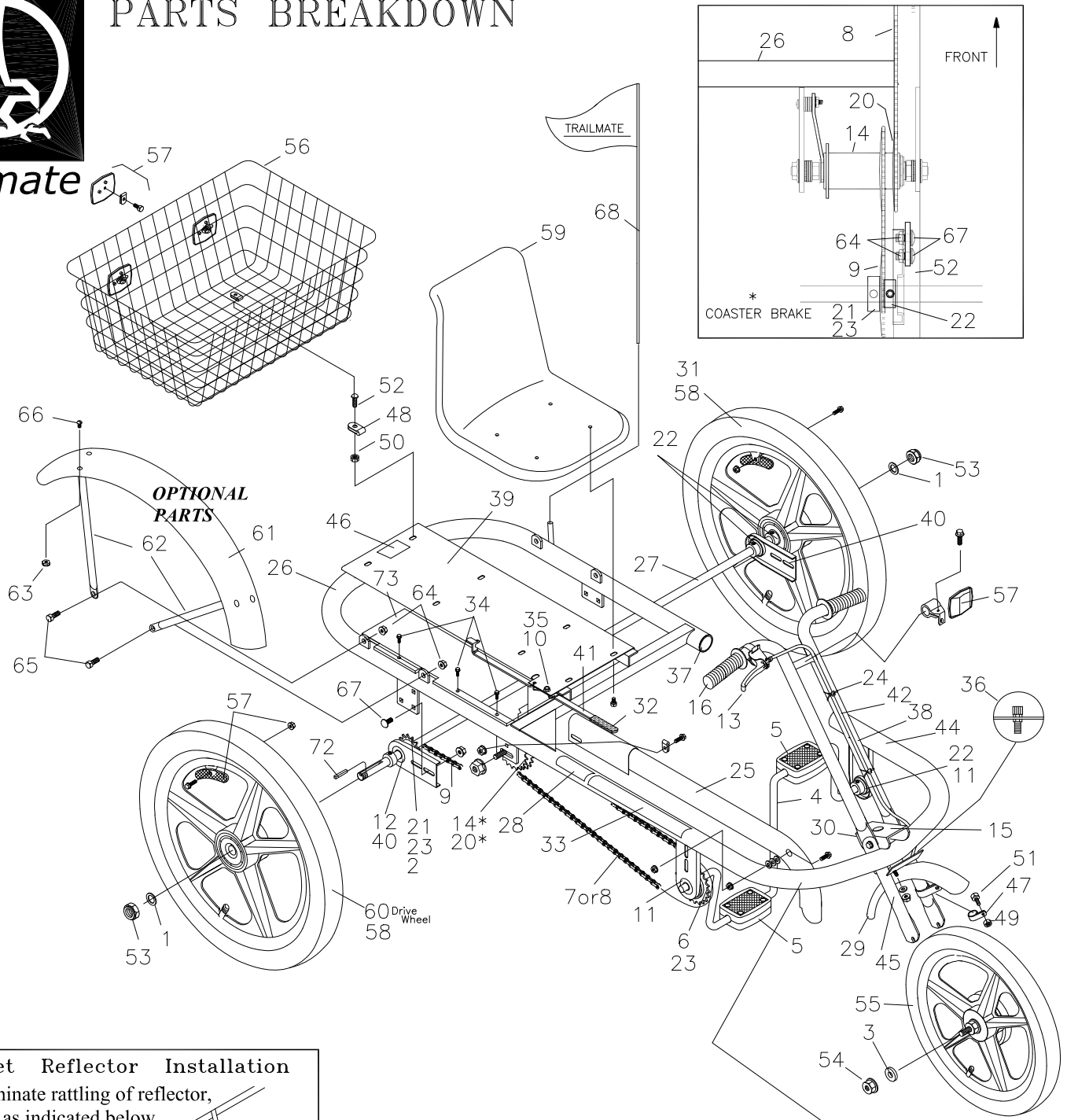


OWNER'S MANUAL



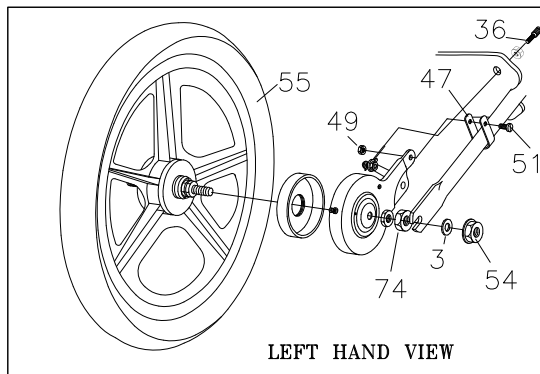
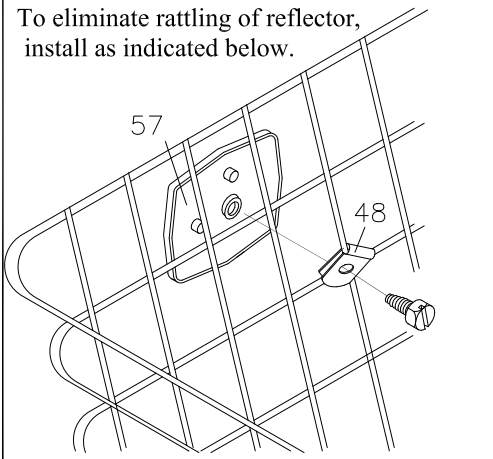
Trailmate

JOY RIDER ILLUSTRATED PARTS BREAKDOWN

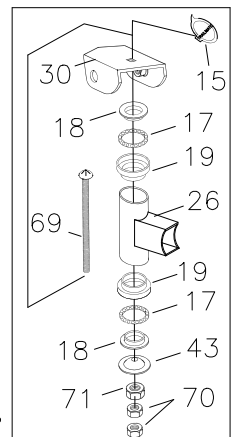


OPTIONAL PARTS

Basket Reflector Installation
To eliminate rattling of reflector, install as indicated below.



LEFT HAND VIEW



LITERATURE KIT #18338 01.21.08

JOY RIDER ASSEMBLY INSTRUCTIONS

TOOLS REQUIRED

3/8" Wrench	5/32" Allen wrench
1/2" Wrench	Common Screwdriver
9/16" Wrench	Phillips Screwdriver
1/2" Socket Wrench	15/16" Wrench
Adjustable Wrench	Air Pump
Pliers	

1. Preparation

Remove all parts from the frame and wheel cartons. Inflate (or have inflated) tires (55 and 58) to pressure recommended on sidewalls. Make sure tires are properly seated on the rims.

2. Rear Wheels, Axle Assembly

Lay the frame assembly upside down and position the rear axle assembly between the frame mounting brackets. The chain sprocket on axle must be on the same side as the chain sprocket at the pedals. Attach the axle bearing holder brackets (40) to the inside of frame mounting brackets with bolts (67) and nuts (64). Do not tighten nuts until the chain has been installed.

Chain. Install chain (9) over drive sprocket and rear sprocket (2) and join with connecting link. Once chain is installed, evenly pull back on the axle assembly until the chain is tight. Tighten the nuts (64) securing bearing holders to the frame.

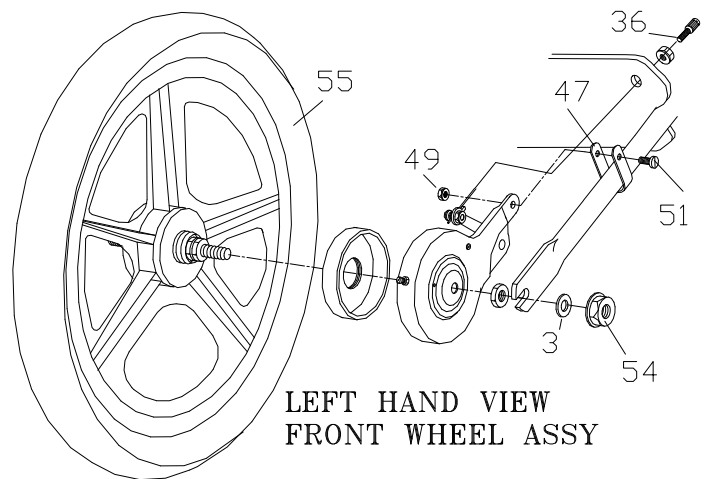
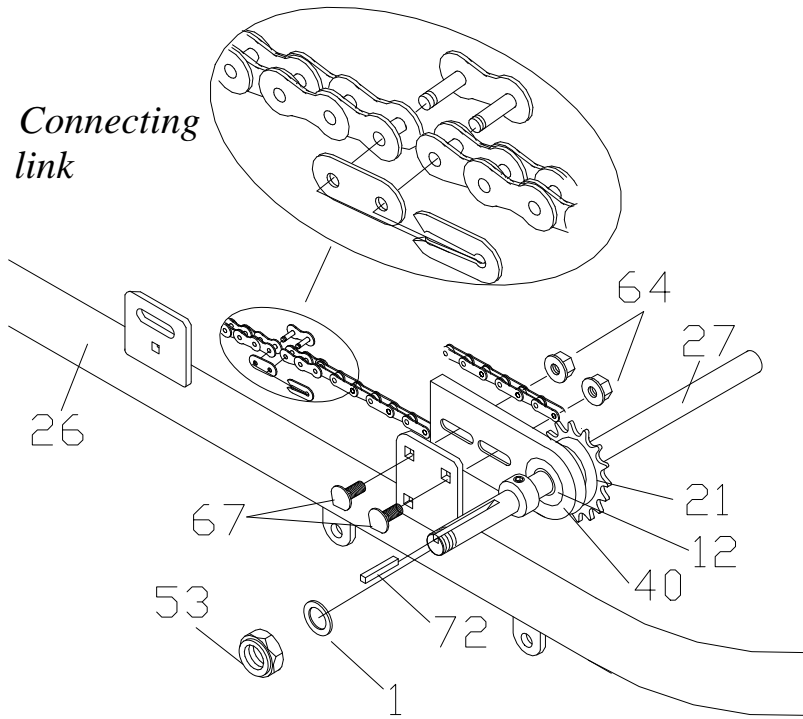
Wheels. Lift up the rear of frame assembly (26) and slide the rear drive wheel (60) onto the right axle shaft. Line up the key ways on axle and on the wheel hub install key square (72) and washer spacer (1). Secure the wheel on the axle with the nut (53). Install non-drive wheel (31) and washer spacer onto the left axle shaft. Secure the wheel on axle with the nut (53). **Important:** Make certain the axle thread fully engages the nylon-locking portion of nut. Do not over tighten it can damage the wheel bearing.

3. Front Wheels:

Place front wheels (55) and brake assembly between the fork with the axle bolts fully into the slots on the end of the fork. Secure with washers (3) and nuts (54). The brake arm must be on the left side and in front of the fork blade.

4. Hand Brake

Loosen the lock nut (49) on the brake cable bracket (at the front wheels). Push the brake cable bracket upward as much as you can while pulling as much cable as possible through the hole in the bolt. Be sure the brake cable is seated properly in the brake lever (13) and that the adjustable "barrel nut" (36) at the fork is protruding below the fork plate as far as possible.



JOY RIDER ASSEMBLY INSTRUCTIONS

Secure the lock nut on the brake bracket to hold the cable in place. **NOTE:** The hand brake may require further adjusting before riding.

5. Seat

Position the seat (59) over the mounting holes in the base seat/basket (39). Insert screw into bottom of the seat and secure seat.

6. Basket

Position the basket (56) onto seat/basket base. Place the four basket brackets (48) over the basket wires and secure with bolts (52) and flanged nuts (50).

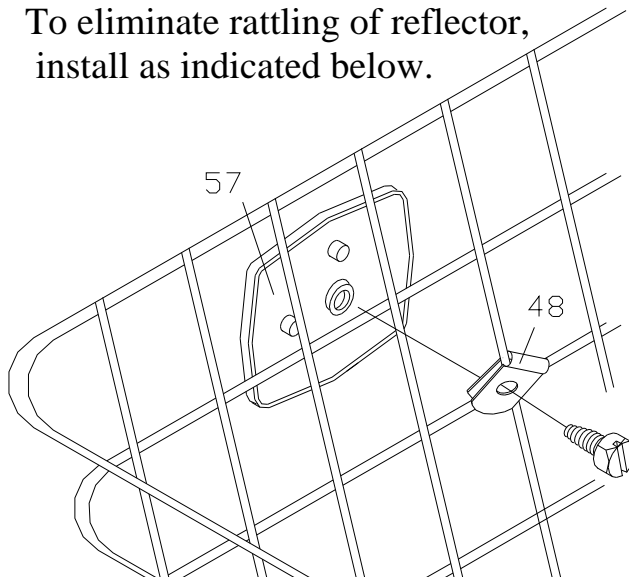
8. Reflectors

Install the red reflectors on the back of the basket. Insert the screw provided with the reflector on the basket so the clip will capture the corner of the vertical and horizontal wires and tighten the screw. Repeat for the other side. The basket reflectors should be about one foot apart. Install clean reflector on each handle cross bar. Slide plastic holder on handle cross bar. Tighten with the screwdriver and install reflector. On plastic MAG wheels install reflectors on tabs using screw and nut provided.

9. Final Check

Install safety flag in holder. Review the instruction, check connecting bolts and screws for tightness, and readjusting the seat and handlebar as necessary.

Basket Reflector Installation
To eliminate rattling of reflector,
install as indicated below.



01.21.08

MAINTENANCE AND INSPECTION

REGULAR MAINTENANCE: Bi-Monthly

1. Keep all painted parts cleaned and waxed for along-lasting luster.
2. Lubricate the following:
 - Axle shafts
 - Chain- turn pedal crank forward and spray freely.
3. When storing over prolonged periods, turn upside down to prevent flats from occurring on the tires. If stored outside, cover to protect finish and moving parts.

PREVENTIVE MAINTENANCE: Every Six Months

These are services that should be performed by you local bicycle shop. A fee may be charged.

1. Check tires for wear, rim cuts and valve core alignment (usually caused by improper air pressure)
2. Check wheels for cracks and alignment.
3. Check brakes for proper operation.
4. Check and repack all bearings and adjust all cones.
5. Check for worn bearings, cones and cups.
6. Check chain for adjustment and clean as needed.
7. Check for loose bolts and nuts.

Attention: While your unit is new, some noises may occur when the unit is breaking in. Should they continue for more than 30 days, see local bike shop.

INSPECTION

Check the following, as it applies to your cycle, on a regular basis:

1. Hand Brake: Make sure the brake engages, by squeezing the hand brake.
2. Wheels: Check wheels for alignment.
3. Pedals: Inspect pedals and make sure pedals is tightly attached to crank.
4. Handle grips: Replace worn or loose grips.
5. Chain: Check for proper tightness. Replace damaged chain immediately.
6. Seat: Adjust seat for ride comfort and safety.
7. Tires: Keep tires inflated to the recommended tire pressure, as indicated on the tire's sidewall.
8. Frame: Replace damaged frame immediately.



Trailmate

2359 Trailmate Drive
Sarasota, FL 34243
Tel: (941) 755-5511
Fax: (941) 758-5141

Visit us @ www.trailmate.com

**For service or to order
replacement parts
please contact your
local Trailmate dealer.**

JOY RIDER

This is a recreational unit, not designed for excessive speeds or misuse.

Do not brake or turn at high speeds. This may cause cycle to roll over. Careless operation may cause rider to lose control and result in **serious injury.**

Things to know before riding your cycle:

1. Know your local bicycle laws and wear a helmet.
2. Do not exceed the recommended weight limit of 250 lbs.
3. No more than one rider at one time.
4. Do not stand on unit.
5. Be sure to install safety flags.
6. Wear light-colored clothing and protective gear.
7. Do not ride at night.
8. Children must be supervised by an adult at all times.

Trailmate Limited Warranty

Trailmate, Inc., guarantees each cycle product against all defects in materials and workmanship for a period of 90 days from date of purchase. Tires and tubes are not covered by this guarantee.

During this period, any part that is judged by the makers to be defective will be replaced free of charge. Any failure resulting from accident, abuse, neglect, normal wear, or improper assembly or maintenance by the owner is not covered.

Trailmate, Inc., further authorizes a lifetime frame guarantee and will replace any frame, at no cost to the buyer, providing that item has not been used for rental use and that:

- 1) The item has not been altered, repaired, or modified in any way.
- 2) The item has not been subject to misuse, negligence, and/or an accident.
- 3) Original ownership is established.

Any parts under this guarantee on which claims are entered shall be returned for inspection with transportation charges prepaid by the claimant. Replacement parts will be shipped F.O.B. factory.

There are no warranties or guarantee, expressed or implied, written or oral, which extend beyond the description on the face hereof.