

# **TRAILMATE METEOR ASSEMBLY MANUAL**

## **(DISC BRAKE VERSION)**



The Trailmate Meteor recumbent has been designed for easy assembly. This means more time to enjoy the smooth ride with single speed, 3 speed coaster brake and 21 speed models available.

# Assembly

1. Remove all parts from the box and carefully unwrap all parts. Leave the tape on the axles so that the keys are not lost.



Tool required: 8" crescent wrench, 1/2" and 9/16" socket wrench, Allen wrenches, rubber mallet, pliers, Phillips screwdriver, air pump.

## 2. Frame Assembly

Loosen the four bolts and remove the Allen screw on the rear of the main frame. Slide in the rear frame and align the holes with the slots and holes. Be sure that the shoulders of the bolts seat into the slots. Install the nylon locknuts; **Do not tighten at this time.**



### 3. Wheels and Front Fender

Attach the front fender to the front fork with the bracket on the back of the fork and the brace attached to the fork at the threaded hole. It may be necessary to loosen the brake shoes and then align them to the rim for proper contact.



*Front fender bracket*



*Front wheel with fender*

Remove nylon locknut from rear axle and slide rear wheels onto the shaft aligning the key square with the slot on the hub.



*Rear wheel with locknut*



*Front Brake shoe aligned*

#### **4. Pedals**

Install the pedals into the crank using a 9/16" open-end wrench to tighten. Note: left hand and right hand thread.



#### **5. Chain**

Install the rear drive sprocket on the left rear axle. Install the rear drive chain and join together with the connecting link. Install the connecting link and spring clip using pliers. Slide the frame sections apart evenly until the chain is tight (approximately 1/4" total up and down movement is permissible) and securely tighten all the rear frame bolts and the upper Allen screw in the center. Rotate the pedal several times to check that the chain is running freely.



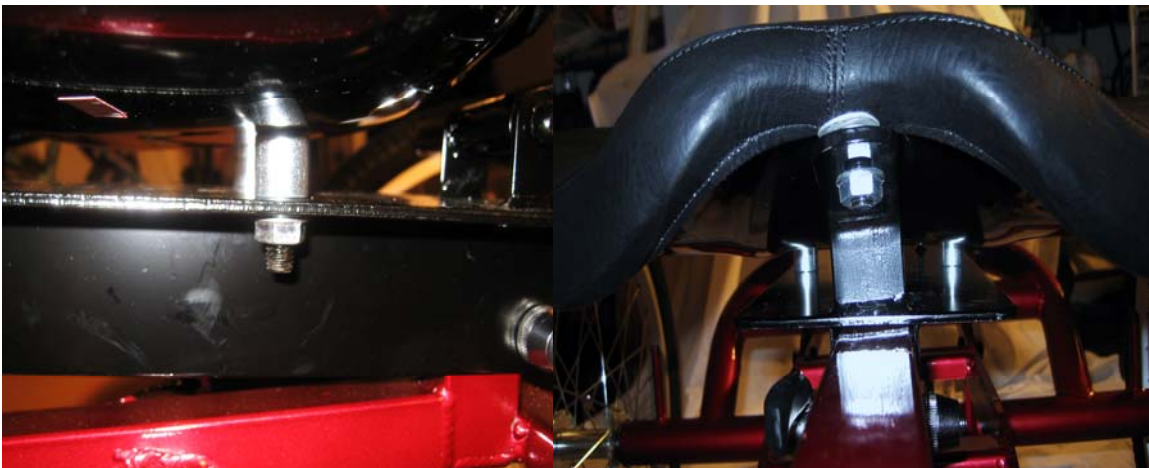
**Keep fingers clear!** If binding move rear sprocket to correct.

## 6. Handlebar

Loosen the Allen screws on the stem and clamp the handle bars in place with the portion containing the long bolt to the rear of the handlebar. Install the stem into the fork until the line marked on the stem is not visible. Align handlebar to the fork as it faces straight ahead and tighten bolt in stem firmly. **Do not** over tighten; this can damage the fork. Position the brake handles and tighten using an Allen wrench. Attach front clear reflector.

## 7. Western saddle Seat

To install the western saddle seat, remove the flanged nuts and place the seat so that it fits to the sliding seat plate. Ensure that the aluminum spacers are in place then tighten three nuts.



## 8. Back Rest Frame and Seat

Attach main frame to the center bracket using Allen wrenches. Attach the adjustable braces to the rear bracket on the main frame and also to the back rest frame. Tighten bolts while ensuring that the frame can slide while the saddle seat is slid back and forth.



*Center support for back rest*

*Vertical braces attached*

Slide the rear seat cover onto the frame. Insert the top corners into the pockets and drape down. Insert nylon straps into the buckles and snap in top to bottom. Turn bottom corners inside out to fit lower frame snugly. Adjust tension for comfort and fit.

Complete assembly by inspecting all fasteners, collars and chains for tightness and inserting safety flag into the holder. Pump tires to the proper pressure. Adjust handlebar and seat as necessary.